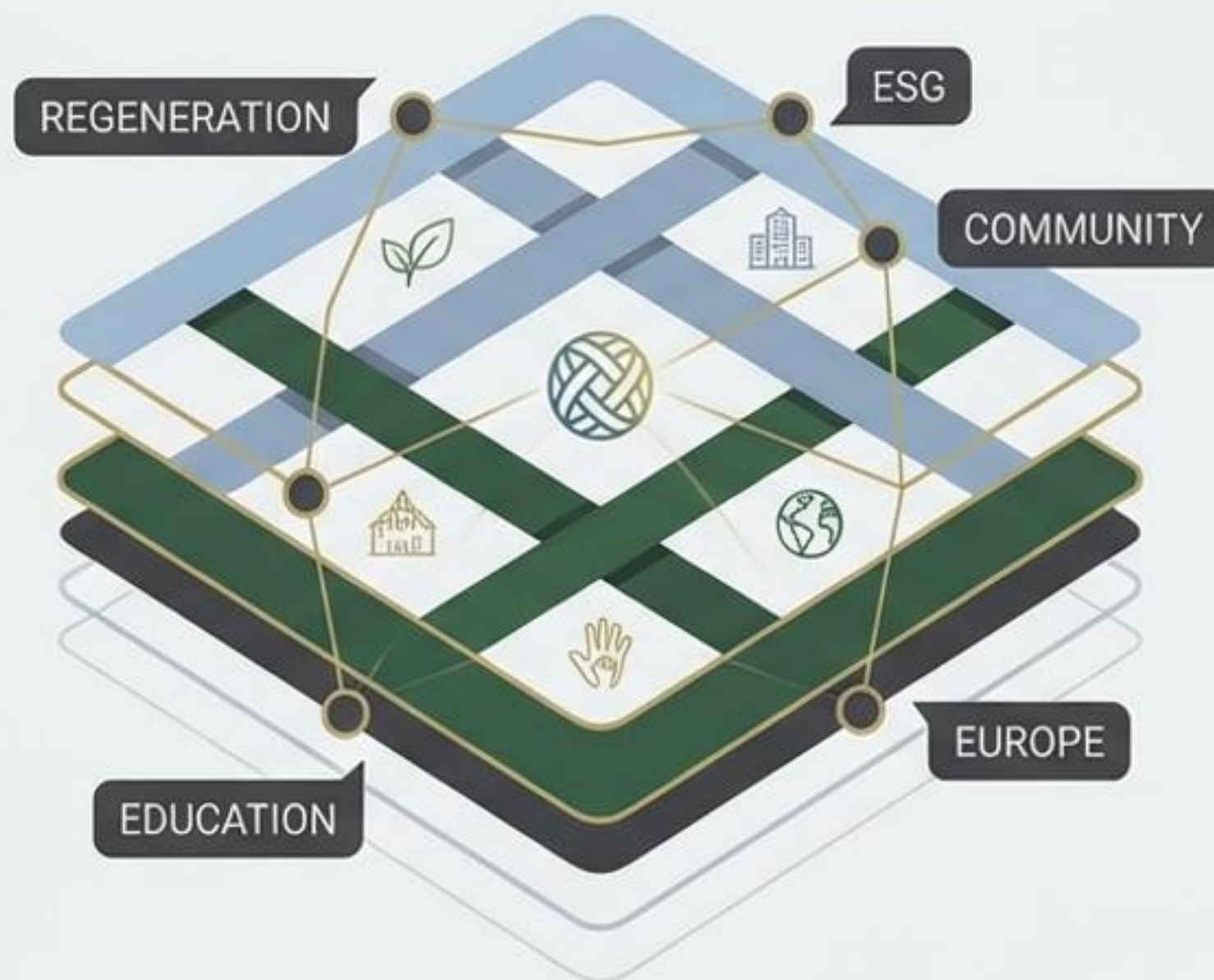


# HUNSTEAD & SCHOOLSTEAD

A Unified Regenerative Ecosystem for Corporations,  
Communities, and the Future of Europe

## MASTER NARRATIVE

- Beyond ESG: Regenerative Action
- Real Assets, Measurable Impact
- Generational Partnership
- Audit-Ready Solutions



**THE DEFINITIVE ESG INVESTMENT** |  
EU-Aligned. Scalable. Transformational.

# THE LIMITS OF TRADITIONAL ESG: THE CASE FOR OPERATIONAL REGENERATION

## *Why Offsets, Consultancy Reports, and Short-Term Pilots Fail*

### THE FRAGMENTED REALITY (TRADITIONAL APPROACH)



### THE OPERATIONAL ECOSYSTEM (HUNSTEAD & SCHOOLSTEAD)



What is missing is an operational ecosystem that turns compliance budgets into measurable, visitable regeneration.  
**Hunstead & Schoolstead** fills this gap, converting ESG expenditure into real-world impact.



## HUNSTEAD & SCHOOLSTEAD

# A Unified Regenerative Framework: Fusing Diverse Solutions into One Coherent Platform



### ADVISOR PERSPECTIVE

“One of the most structurally complete regenerative project ecosystems currently in development.”

### CORPORATE PERSPECTIVE

“A ready-made, CSRD-aligned operating system.”

This is regeneration you can measure, visit, experience, and report.







# ANCHORED IN REAL ASSETS

Tangible Hungarian Land, Buildings, and Production Systems.



## MEASURABLE OUTCOMES

- ✓  **SOIL CARBON SEQUESTRATION**  
(Tonnes/Year)
- ✓  **BIODIVERSITY UNITS**  
(Habitat Area/Quality)
- ✓  **RURAL EMPLOYMENT  
& LIVELIHOODS**  
(Jobs Created)
- ✓  **STUDENT LEARNING HOURS**  
(Environmental Literacy)

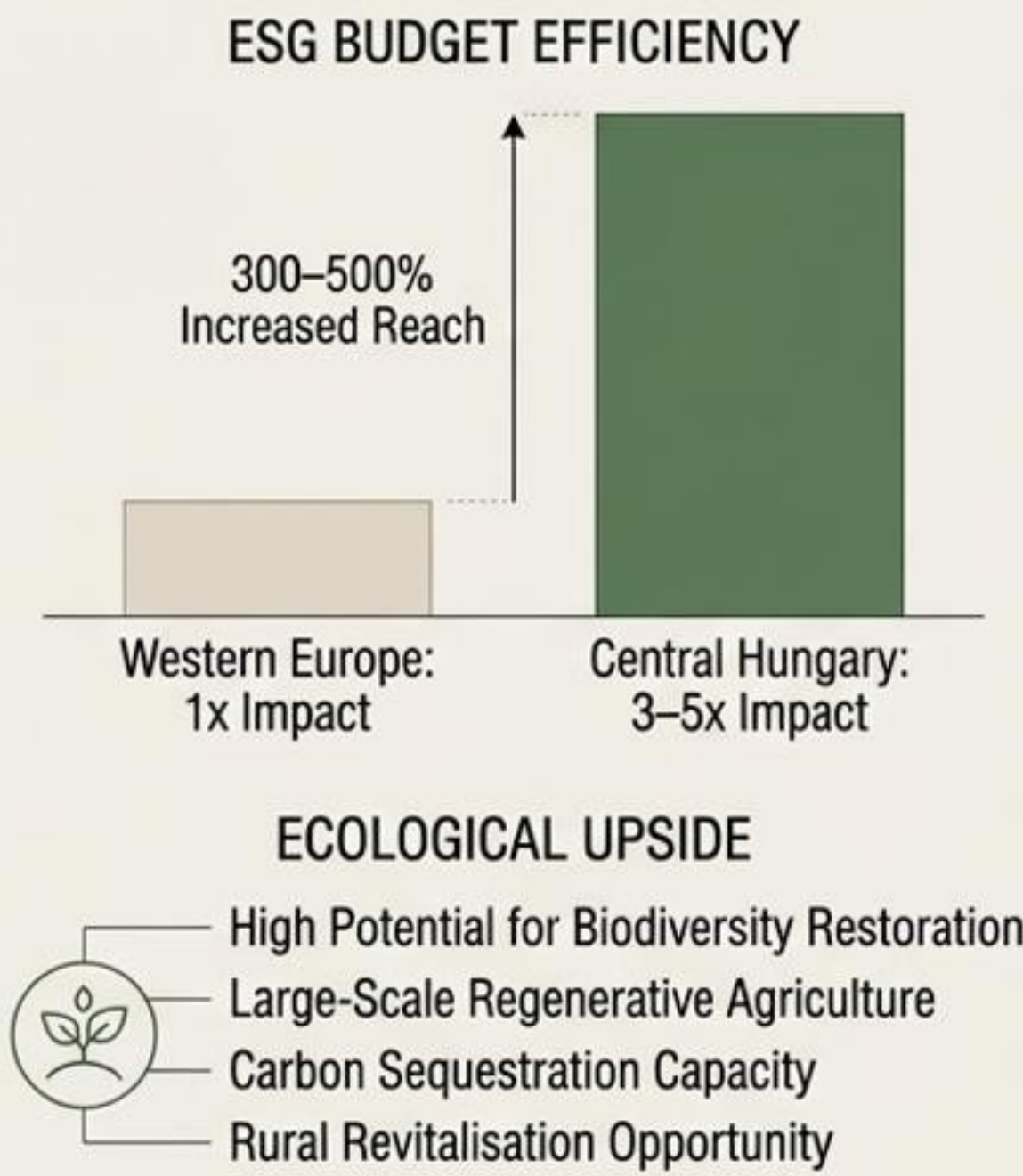
**AUDIT-READY. VISIBLE.  
REPORTABLE WITH CONFIDENCE.**

# CENTRAL HUNGARY: STRATEGIC HUB FOR HIGH-IMPACT ESG INVESTMENT

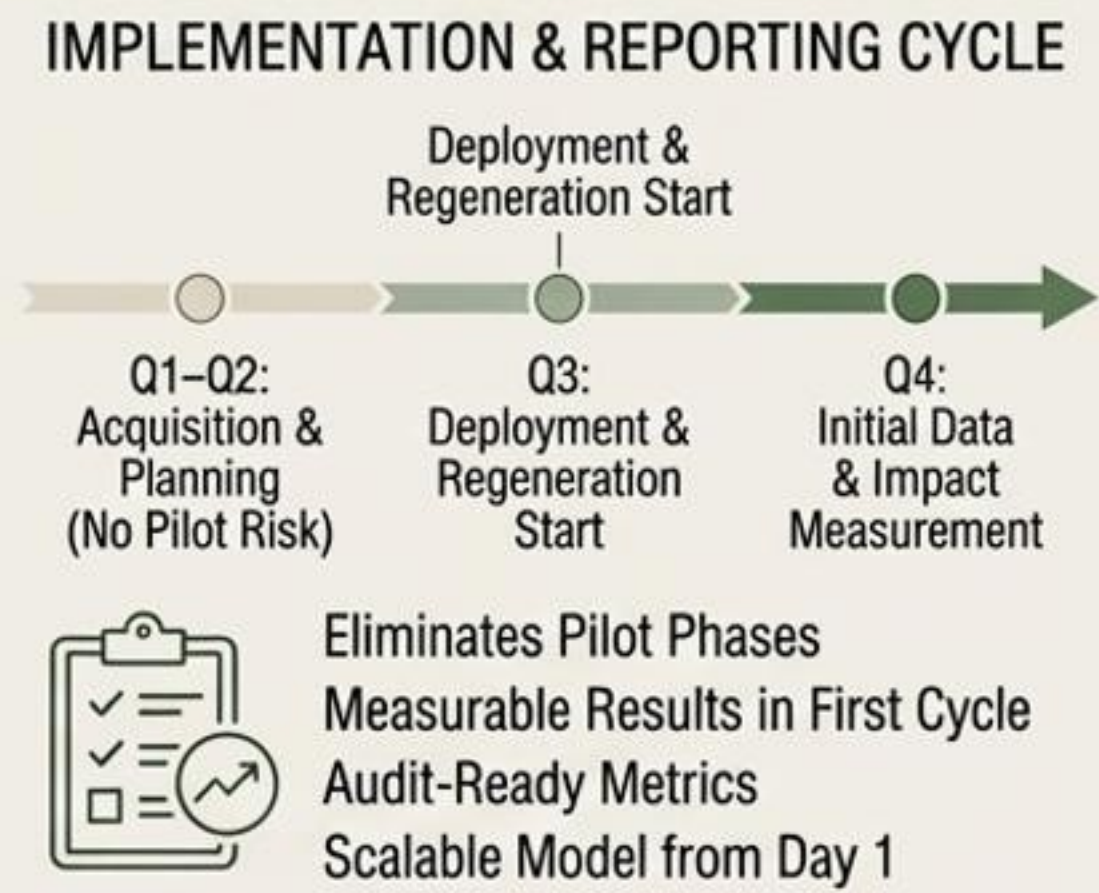
## EU-COMPLIANT GOVERNANCE & STRATEGIC ACCESS



## ECOLOGICAL & FINANCIAL ADVANTAGE



## ACCELERATED IMPACT & RISK MITIGATION



**THE DEFINITIVE ESG INVESTMENT | EU-Aligned. Scalable. Transformational.**

Central Hungary enables rapid, measurable, and cost-effective ESG impact, positioning partners at the forefront of continental regeneration.

# ANCHORED IN REAL ASSETS, NOT ABSTRACTION

Operational, Ready-to-Deploy Model with Measurable Results.

## PHYSICAL ASSETS IN PLACE



### EXISTING RURAL HQ

Operational hub for all ecosystem activities.



### CORPORATE RETREAT CENTRE

Exclusive space for leadership strategy & wellbeing.



### SISTER APARTMENTS

Quality accommodation for visitors and staff.



### 20+ HAMLET PROPERTIES

Scalable housing for community and partners.



### PRE-ZONED REGENERATIVE LAND

Ready for immediate EU-aligned development.

## RAPID DEPLOYMENT TIMELINE



### MOU SIGNED

Agreement with partners & stakeholders.



### MONTHS, NOT YEARS

Accelerated implementation.



### FIELD RESULTS & REPORTING





Tangible ecological & social impact data.

This is ESG you can walk on. Not consultancy output — it is place-based transformation.

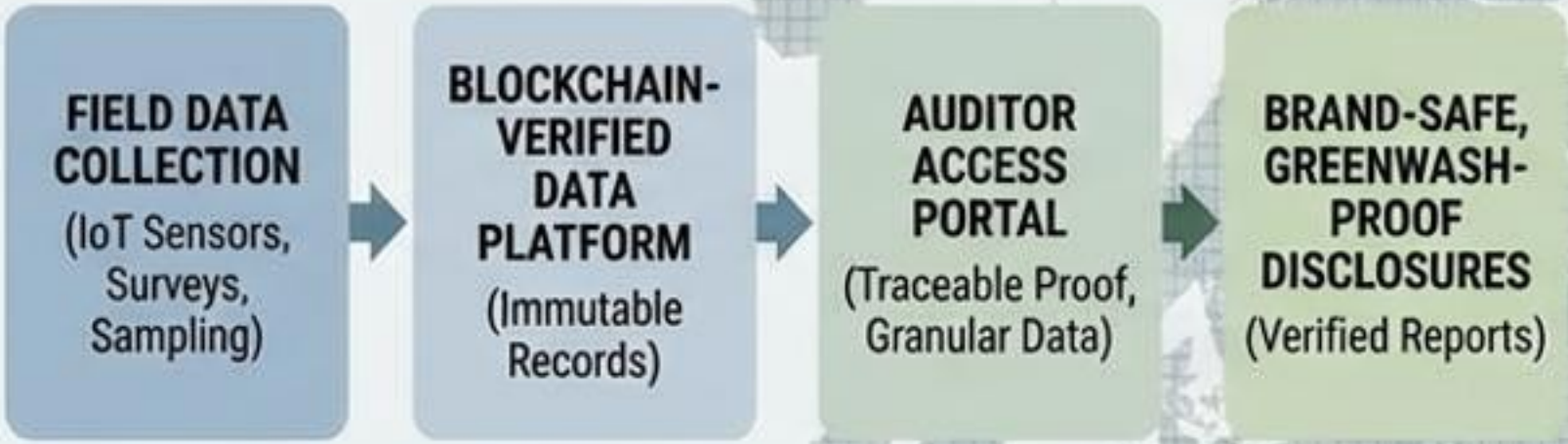
# HUNSTEAD & SCHOOLSTEAD: AUDIT-READY, MEASURABLE ESG IMPACT

## Annualised Datasets & Transparent Evidence Portals

### ANNUALISED DATASETS & STANDARDS ALIGNMENT

DATASET	METRIC / KEY PERFORMANCE INDICATOR	FRAMEWORK ALIGNMENT	STANDARDS
 Soil Carbon Sequestration	Tonnes of CO2e / Hectare / Year	EU Taxonomy, CSRD, TNFD, SDGs	ISO 14064, Verra, Gold Standard
 Biodiversity Net Gain	Habitat Units, Species Richness, Ecological Integrity Index	EU Taxonomy, CSRD, TNFD, SDGs	TNFD LEAP Approach, IUCN Red List
 Social Inclusion & Rural Employment	Local Jobs Created, Community Engagement Hours, Well-being Index	EU Taxonomy, CSRD, TNFD, SDGs	GRI, Social Value UK
 Youth Environmental Literacy	Student Participation, Regenerative Skills Acquired, Intergenerational Knowledge Transfer	EU Taxonomy, CSRD, TNFD, SDGs	UNESCO ESD, OECD Learning Compass 2030

### TRANSPARENT EVIDENCE PORTALS & DISCLOSURE



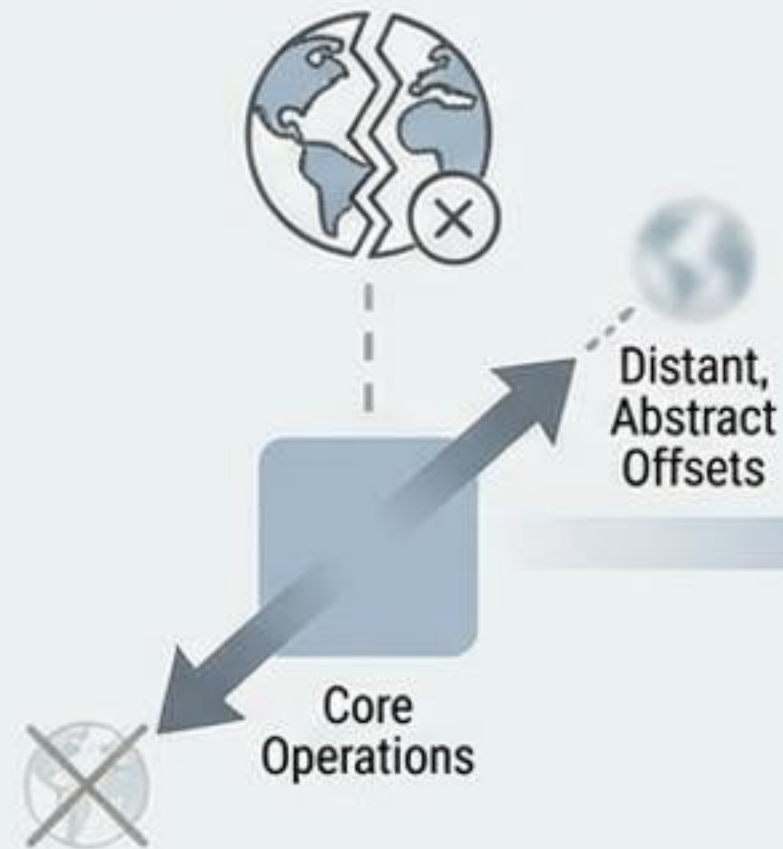
### CORPORATE VALUE & CREDIBILITY



# HUNSTEAD & SCHOOLSTEAD — PARTNER VALUE: VERIFIED OPERATIONAL IMPROVEMENTS

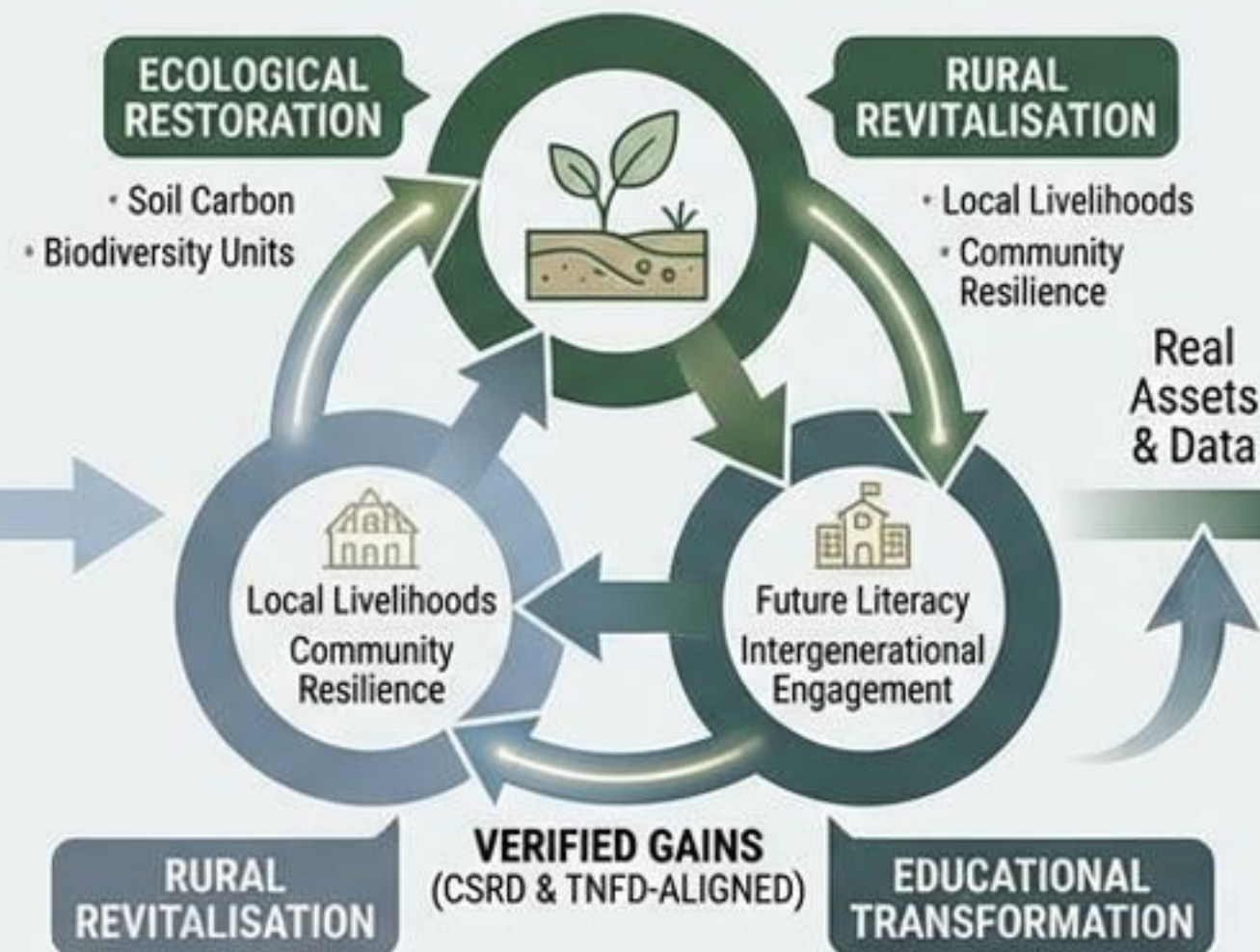
Moving Beyond Offsets to Measurable, Place-Based Transformation & Defensible Sustainability

## TRADITIONAL ESG: THE OFFSET TRAP



- ✓ Unverifiable Impact
- ✗ Criticism Risk (Greenwashing)
- ✗ Disconnected from Core Narrative
- ✓ Regulatory Scrutiny

## HUNSTEAD & SCHOOLSTEAD: OPERATIONAL IMPROVEMENT



Direct, Measurable Field Results.  
Place-Based & Transparent.  
Not an Offset, but a Systemic Upgrade.

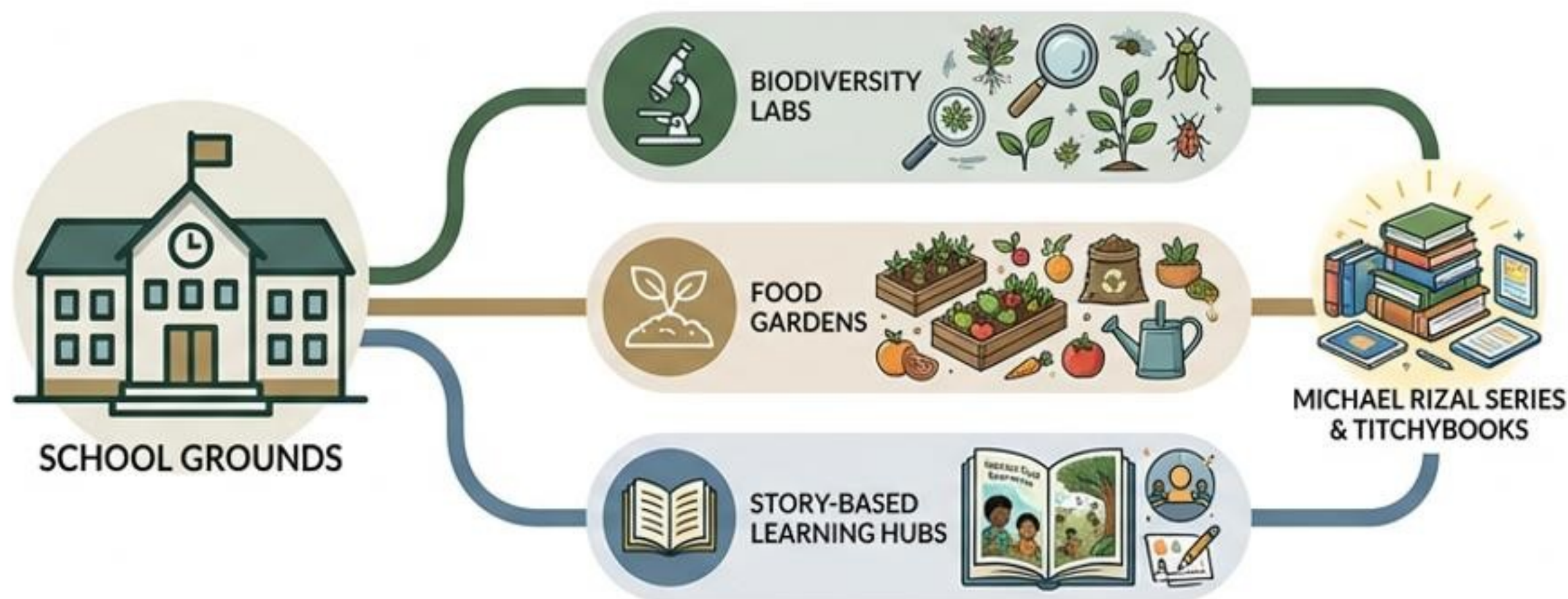
## PARTNER VALUE: DEFENSIBLE NARRATIVE



Strengthened Core Narrative.  
Mitigated Risk. Long-Term Value Creation.  
Future-Proofed Strategy.

# HUNSTEAD & SCHOOLSTEAD — SCHOOLSTEAD: GENERATIONAL ENGINE AT THE HEART OF THE MODEL

Transforming Schools into Regenerative Learning Ecosystems

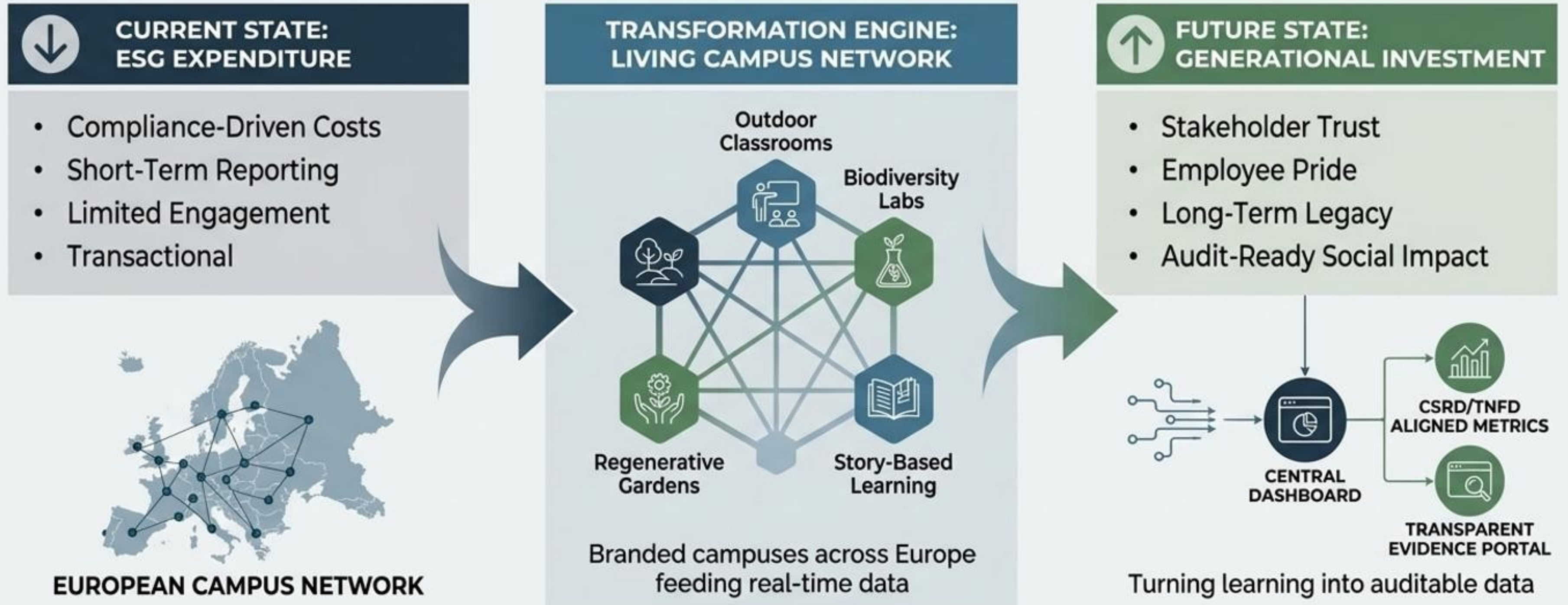


## OUTCOMES & ESG INTEGRATION



# FROM EXPENDITURE TO INVESTMENT: BRANDING LIVING CAMPUSES FOR GENERATIONAL IMPACT & AUDIT-READY SOCIAL VALUE

Turning childhood learning into measurable, transparent social impact across Europe



# CORPORATE RETREAT & LEARNING CENTRE: ACCELERATING CULTURAL TRANSFORMATION

Immersive Leadership Experiences in Regenerative Strategy, Wellbeing, and Sustainability.



Executives depart with lived experience and strategic clarity, driving genuine, lasting organizational change.

# CORPORATE CULTURE SHIFT & LEADERSHIP

From Off-Site Retreats to Regenerative Ambassadors

## HUNSTEAD'S BLENDED EXPERIENCE



## AMBASSADORS FOR REGENERATIVE THINKING



### PRODUCT DESIGN

Integrating  
circularity and  
natural  
principles.



### SUPPLY CHAINS

Ensuring  
resilience and  
ethical sourcing.



### CUSTOMER ENGAGEMENT

Building trust  
through shared  
values.

# HUNSTEAD & SCHOOLSTEAD

A Unified Regenerative Ecosystem for Corporations, Communities, and the Future of Europe

## A SYSTEMIC INTERVENTION: MULTIPLYING IMPACT

### FOUNDATIONS



- Scalable Rural Housing
- Food Resilience
- Cultural Continuity Programmes

### MINISTRIES



Meet EU Green Deal Targets

### MUNICIPALITIES



- Low-Cost Regeneration Templates



SHARED METRICS & MULTIPLIED IMPACT: CSR, CSRD, PHILANTHROPIC REPORTING

The same metrics serve all stakeholders, multiplying each euro's impact.

# PARTNERSHIP PACKAGES & INVESTMENT TIERS

Flexible, Scalable Engagement for Corporations, Foundations, and Institutions



## UNIVERSAL BENEFITS ACROSS ALL TIERS



**AUDIT-READY METRICS  
& COMPLIANCE**



**CO-CREATED NARRATIVE  
CONTENT**



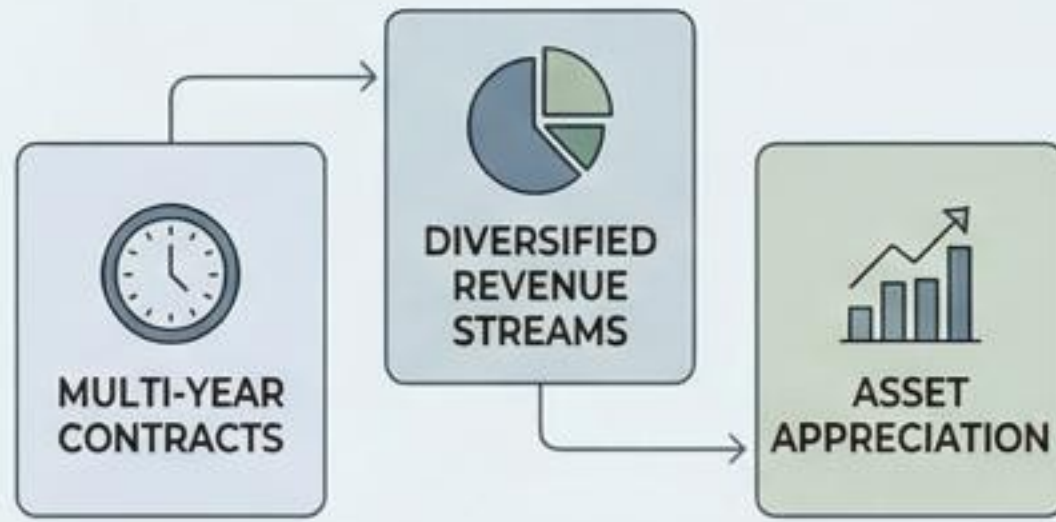
**YEAR-ROUND VISIBILITY  
ACROSS CAMPUS NETWORK**

# RISK MITIGATION: SECURE PARTNERSHIPS & MEASURABLE RESILIENCE

## Strategies for Financial Stability, Early Warning, and Flexible Scalability



### FINANCIAL & ASSET PROTECTION



Contracts provide long-term stability. Diversify income protects against cuts. Land and ecological value grow over time.



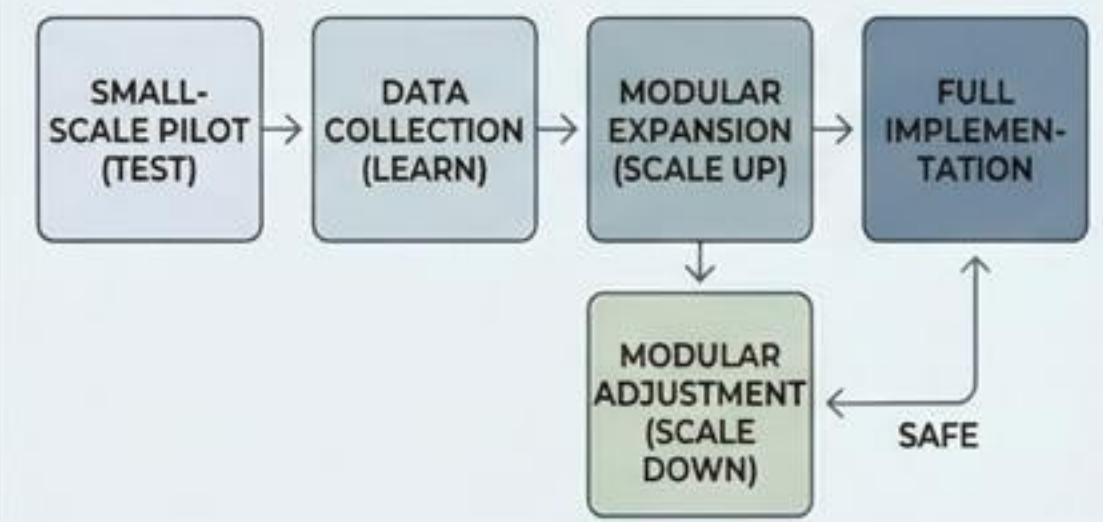
### TRANSPARENT EARLY WARNING SYSTEMS



Transparent dashboards provide continuous visibility into ESG performance and risk factors, enabling proactive intervention.



### MODULAR PILOTS & SCALABLE IMPLEMENTATION



Test concepts with minimal risk. Scale up based on proven success. Scale down rapidly without reputational damage if needed.

Hunstead & Schoolstead offers a low-risk, high-resilience partnership framework grounded in tangible assets, actionable data, and flexible operational models.

# HUNSTEAD & SCHOOLSTEAD — MASTER NARRATIVE

A Unified Regenerative Ecosystem for Corporations,  
Communities, and the Future of Europe

## COMPLIANCE & VERIFICATION



- EU-Law Compliant Activities
- Pre-Screened for Greenwashing Risk
- Backed by Third-Party Verification



## ASSET-BASED DURABILITY

- Asset-Based Nature Ensures Legitimacy
- Resilient to Regulatory Tightening
- Tangible, Measurable Value



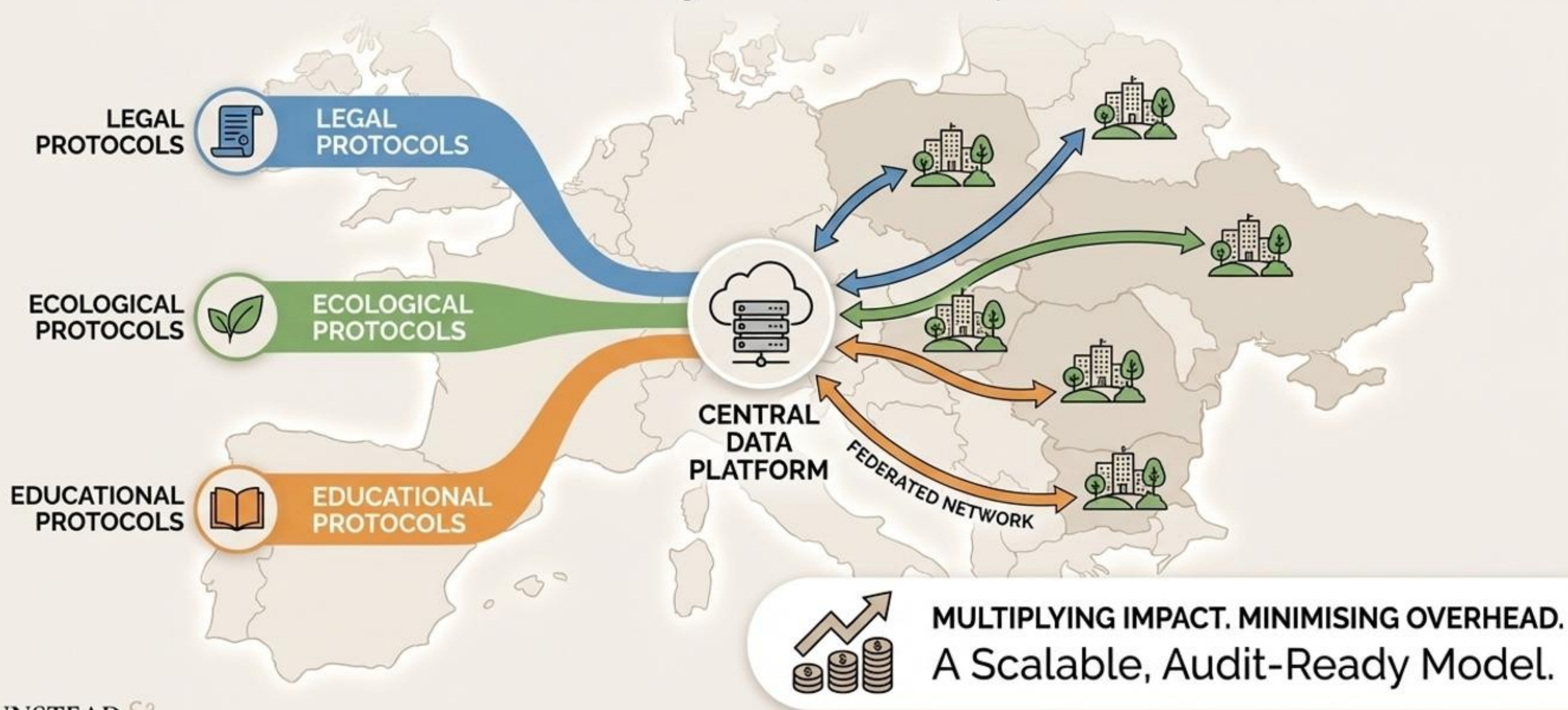
## NARRATIVE DURABILITY

- Credible Communications Narrative
- Year-Round Visibility
- Long-Term, Transformational Partnership

**THE DEFINITIVE ESG INVESTMENT** |  
EU-Aligned. Scalable. Transformational.

# SCALABLE REPLICATION & FEDERATED IMPACT

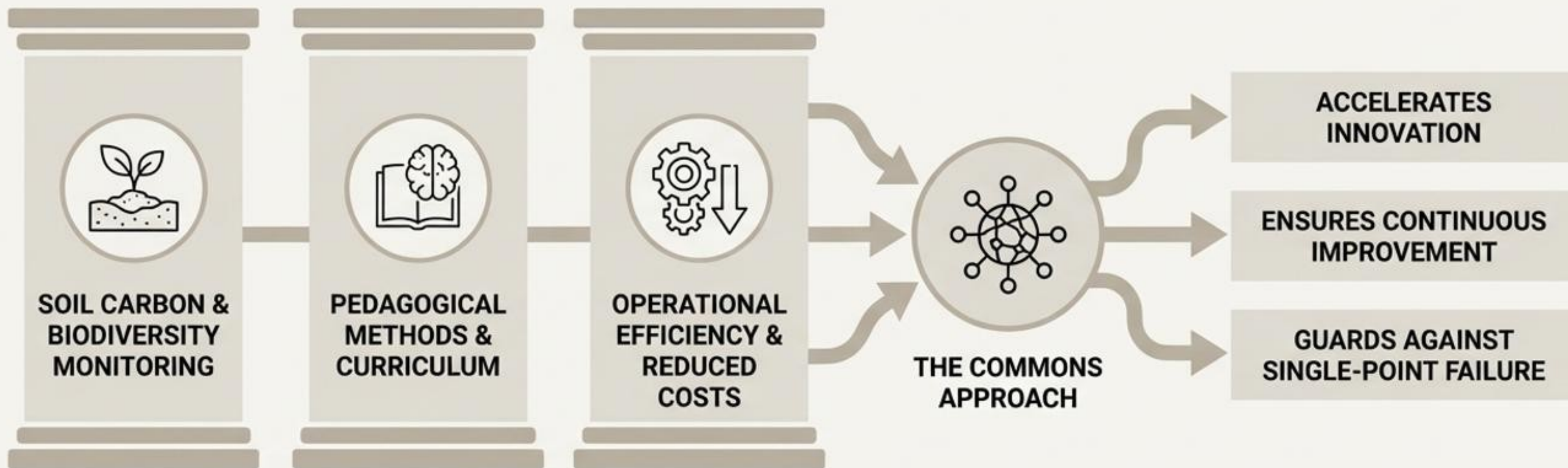
Standardised Protocols for Regenerative Campus Growth Across CEE



# HUNSTEAD & SCHOOLSTEAD

A Unified Regenerative Ecosystem for Corporations, Communities, and the Future of Europe

## SHARED R&D & THE COMMONS APPROACH: ACCELERATING INNOVATION



Shared R&D on soil carbon, biodiversity monitoring, and pedagogical methods accelerates innovation while reducing individual partner costs. The commons approach ensures continuous improvement and guards against single-point failure.

# HUNSTEAD & SCHOOLSTEAD — STRATEGIC ADVANTAGE OF EARLY PARTNERSHIP

First-Mover Value Proposition and Delay Risks in Regenerative ESG Investment

## FIRST-MOVER PARTNERS LOCK IN:



**PRIME LAND PLOTS:**  
Secure priority selection of high-value ecological assets.



**EXCLUSIVE BRANDING RIGHTS:**  
Define the regenerative narrative as a founding partner.



**FRONT-ROW POSITIONING:**  
Influence and align with EU regeneration policy frameworks.

COMPETITIVE SHIFT &  
MARKET MATURATION

## DELAY RISKS:



**HIGHER LAND PRICES:**  
Face increased acquisition costs as value appreciates.



**REDUCED AVAILABILITY:**  
Limited access to key regenerative sites.



**LOSS OF NARRATIVE LEADERSHIP:**  
Competitors adopt and dominate place-based ESG strategies.




Seize the Opportunity for Generational Impact and Leadership.

# PARTNERSHIP ACTIVATION TIMELINE & ACCELERATED IMPACT




## MONTH 1: ALIGNMENT & FOUNDATION

-  MOU and KPI alignment
-  Establishing joint objectives and reporting standards

## MONTH 2: ALLOCATION & MEASUREMENT

-  Land allocation & plot identification
-  Baseline measurement & initial ecological survey
-  Co-branding workshop & narrative development

## MONTH 3: ACTIVATION & REPORTING

-  Field activities begin (planting, preparation)
-  Data portal goes live for monitoring
-  First CSRD-ready report delivered (audit-ready)



## ACCELERATED VERIFIED IMPACT: PARTNERS CAN ANNOUNCE VERIFIED IMPACT WITHIN ONE FINANCIAL QUARTER

Based on audit-ready ecological and social data, EU-aligned and brand-safe

# HUNSTEAD & SCHOOLSTEAD: A LIVING LEGACY

More Than Carbon Credits. A Transformational Regenerative Model.

## RESTORED LAND



Ecological Restoration &  
Biodiversity Units

Soil Carbon  
Sequestration

Resilient Landscapes.

## EDUCATED CHILDREN



Nature-Based Learning  
& Literacy

Intergenerational  
Knowledge Transfer

Future Stewards

## REVITALISED VILLAGES



Community Renewal  
& Heritage

Local Food Systems

Social Capital &  
Wellbeing

## FUTURE-PROOF COMPANIES



Audit-Ready ESG Impact

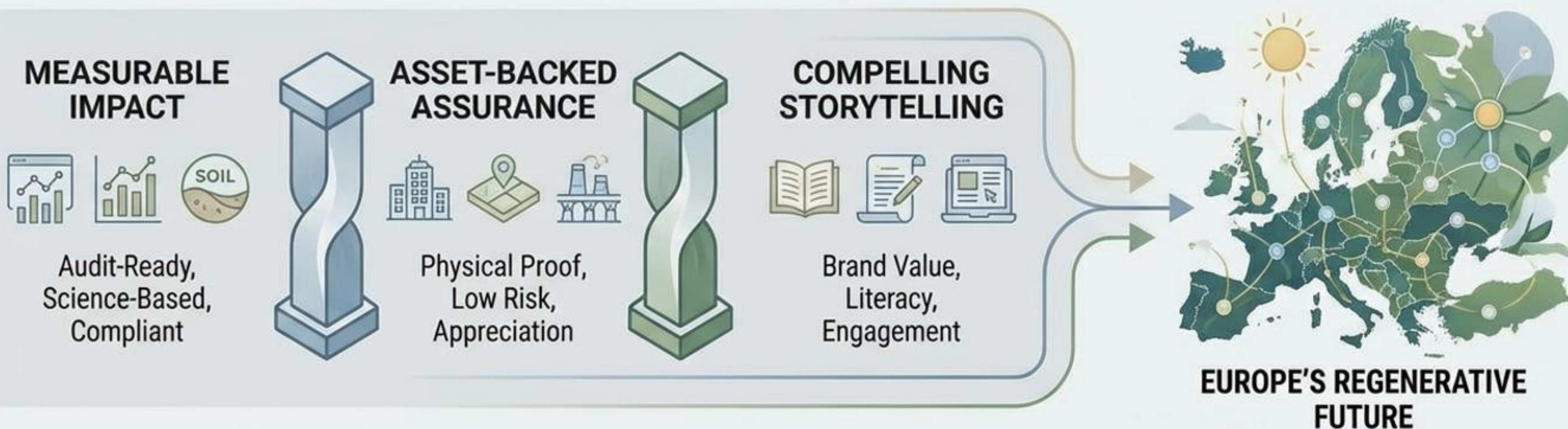
Risk Mitigation &  
Reputation

Long-Term Value  
Creation

Transforming Compliance Budgets into Enduring Ecological and Cultural Capital.

# HUNSTEAD & SCHOOLSTEAD

A UNIFIED REGENERATIVE ECOSYSTEM FOR CORPORATIONS,  
COMMUNITIES, AND THE FUTURE OF EUROPE



*By integrating measurable impact, compelling storytelling, and asset-backed assurance, partners become co-authors of Europe's regenerative future. This is the definitive ESG investment: visionary scope, disciplined execution, and a continent-wide blueprint ready for immediate activation.*